

FOR LEASE

RAHEJA CHAMBERS

Near Silk Board Junction, Outer Ring Road
Bengaluru- 560034

THE ADVANTAGE RAHEJA
A DESPAC RAHEJA INITIATIVE



PROJECT HIGHLIGHTS

- Project Strategically located in one of Bangalore's fastest developing Commercial / IT/ ITeS growth corridor
- Prime Commercial office space spread across 16 Floors with floor plate of ~53,000 Sq ft leasable area & efficiency of 80% (+/-2%), Ready for fitouts by Q2 2019
- **Warmshell** office space with highly competitive Commercial and Technical specifications
- Excellent Frontage and Visibility from Outer Ring Road
- Located at a distance of 400 Mts from Silk Board Junction
- Close to proposed Metro Interchange station and proposed flyover over Silk Board Junction
- Excellent Social Infrastructure with Residential catchment and Educational Institutions in the vicinity
- Car park ratio of 1 slot for every 550 sq ft

Area Statement (Sq ft)

Ground Floor	6,676
First Floor (Food Court)	37,034
Second Floor	53,581
Third Floor	54,352
Fourth Floor	52,382
Fifth Floor	53,613
Sixth Floor	52,549
Seventh Floor	52,549
Eighth Floor	53,582
Ninth Floor	52,383
Tenth Floor	52,383
Eleventh Floor	53,488
Twelfth Floor	51,895
Thirteenth Floor	51,895
Fourteenth Floor	52,860
Fifteenth Floor	51,661
Sixteenth Floor	31,329
Total Area	814,212 Sq ft



CONTACT US

Raveendra Hegde

Director
+91 99860 11519
Raveendra.hegde@cbre.co.in

Joyson Singerian

Senior General Manager
+91 95383 94440
Joyson.singerian@cbre.co.in

FOR LEASE RAHEJA CHAMBERS

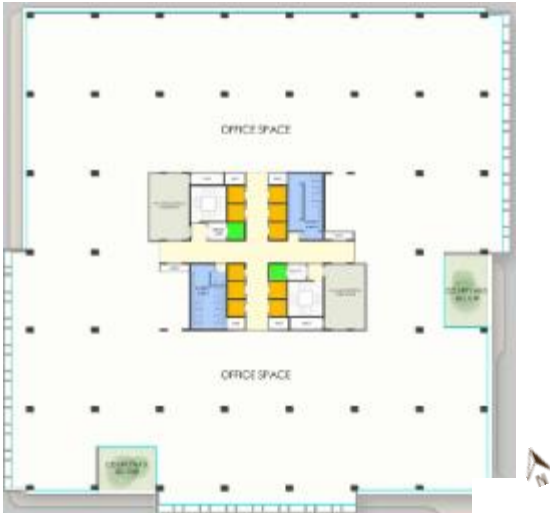
Near Silk Board Junction, ORR
Bengaluru- 560034



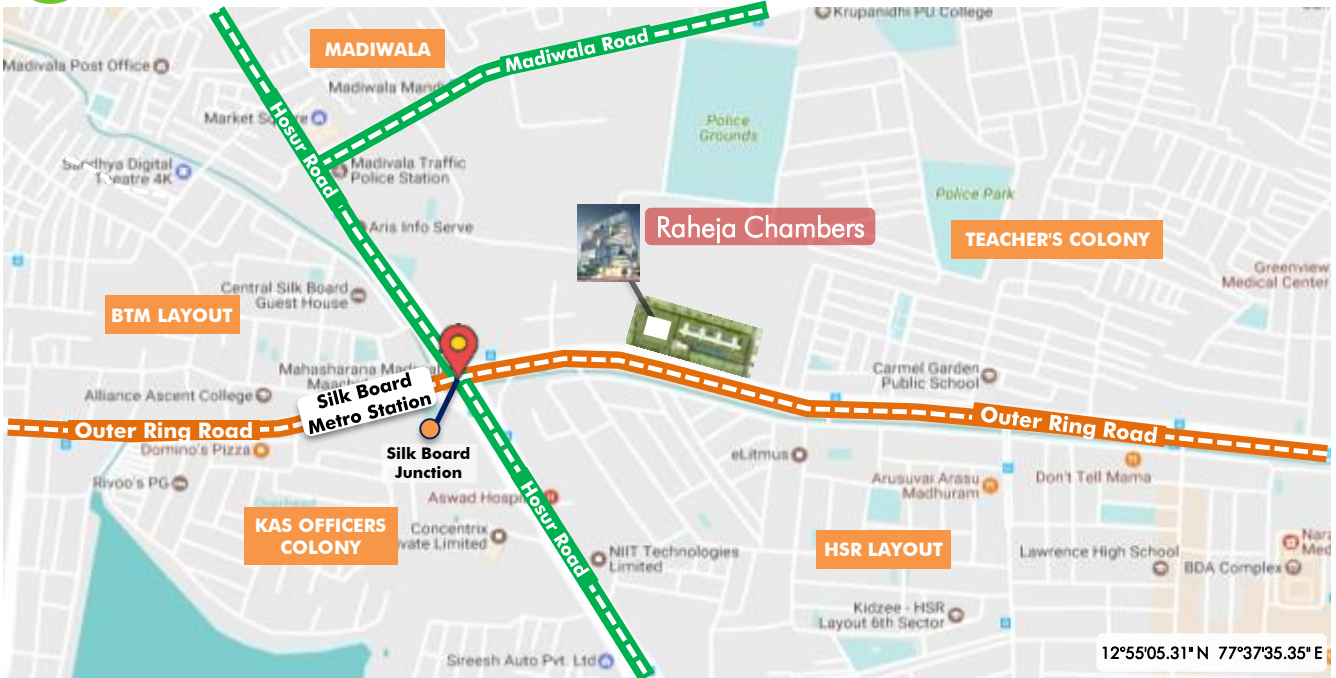
FLOOR PLAN



MASTER PLAN



LOCATION COORDINATES



© 2018 CBRE, Inc. This information has been obtained from sources believed reliable. We have not verified it and make no guarantee, warranty or representation about it. Any projections, opinions, assumptions or estimates used are for example only and do not represent the current or future performance of the property. You and your advisors should conduct a careful, independent investigation of the property to determine to your satisfaction the suitability of the property for your needs.

Photos herein are the property of their respective owners and use of these images without the express written consent of the owner is prohibited.